

# BASIC

The atmosphere is the gaseous envelope surrounding our planet and consists of

- nitrogen
- oxygen
- carbon dioxide

traces of other gases like argon, krypton, xenon, neon, helium, water vapour, ammonia, ozone and suspended particles. But today, the amount of carbon dioxide has increased causing the heating up of the earth, the melting of the polar ice caps, and disturbing the ozone layer.

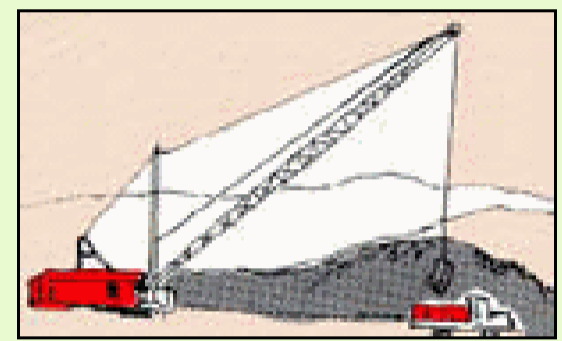
## WE NEED OXYGEN FOR OUR EXISTENCE

### AIR POLLUTION

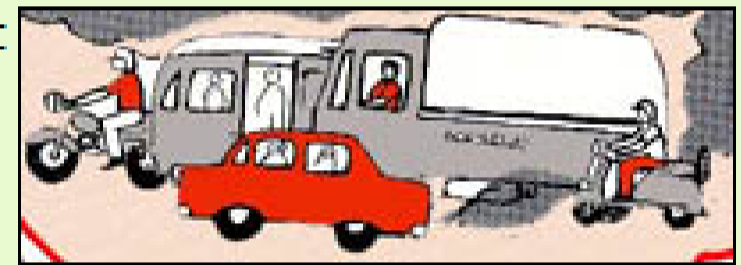


**TOBACCO SMOKE** contains carbon monoxide, tar and nicotine which increases heart attacks and causes cancer.

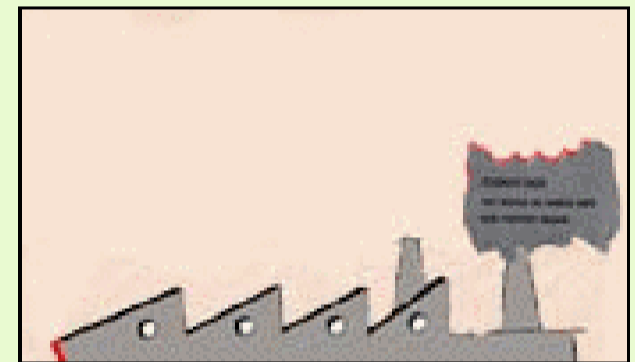
**MINING ACTIVITIES** lead to rock particles, coal and mineral dust that cause lung and respiratory ailments.



**CARBON MONOXIDE & LEAD** from exhausts of motor vehicles affect the brain and organs like the kidney.



**POISONOUS GASES** from factories and chemical plants cause respiratory diseases.

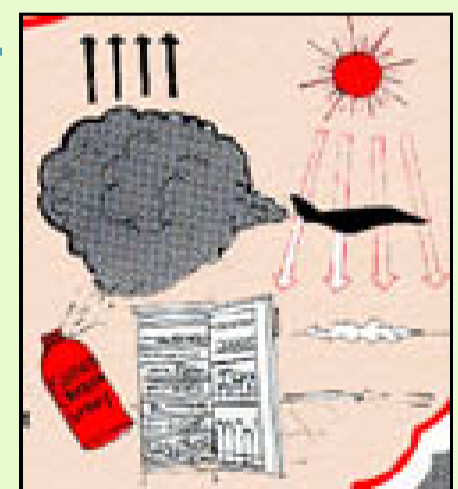


**DECOMPOSING GARBAGE AND OPEN SEWERS** emit methane and hydrogen sulphide. Exposed garbage and sewers are a breeding ground for mosquitos, flies, germs and bacteria.

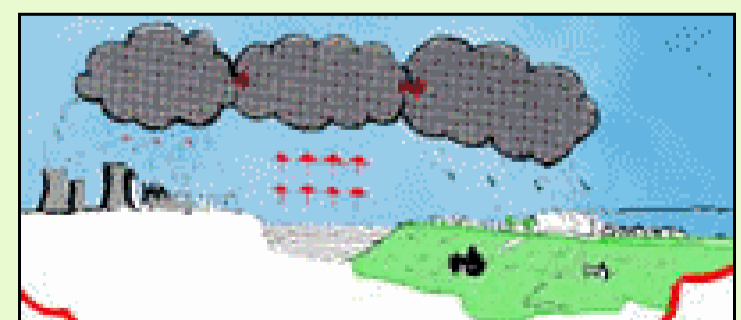
**SMOKE FROM BURNING FUELS AND OIL RIGS** cause global warming and impure air. Smoke contains benzopyrene which causes cancer.



**ACID RAIN** when acidic gases dissolve in the moisture in the air, acids are formed. The acids fall on the earth as 'acid rain' and pollute fresh water sources.



**GREEN HOUSE EFFECT** Increasing carbon dioxide in the atmosphere due to industrial activity & burning of fossil fuels traps more heat, changes the climate, melts the polar ice caps & submerges coastal areas.



**OZONE DEPLETION EFFECT** Halons (CFCs) destroy the protective ozone layer and let in harmful ultraviolet rays, causing skin cancer and affecting plant life.

